

HOT BONDER

AHBEASY SV4

SINGLE ZONE

Our hot bonder AHBEASY S is ideal for complex repairs involving different materials and work areas.

Ideal for on-site repairs, its compact size makes it easy to transport and handle. It can repair very large zones and can be used with up to 6 TCs.



IDEAL FOR

- ✓ Easy to handle and transport
- ✓ Structural repairs
- ✓ 6 TCs for 1 zone

ADVANTAGES

- ✓ Qualification in SRM
- ✓ Easy Mode
- ✓ Archiving every 2"
- ✓ Unlimited programs
- ✓ Quiet Venturi
- ✓ 3 types of report (PDF, CSV,)
- ✓ Fuse

MAIN FEATURES

- ✓ Weight: 6,5 kg
- ✓ 10,1" touch screen
- ✓ 16 A per zone
- ✓ 6 TC baseplates
- ✓ 1 USB port
- ✓ 1 Printer

OPTIONS

- ✓ Calibration software **A10OPTCALAHB380**
- ✓ Remote Control **A11OP380-5G01**
- ✓ SMS alarm option **A11OP380DSMS**
- ✓ Hygrometer **A11OP380HYG**
- ✓ Valise d'accessoires **A6ACHBEASY-S**

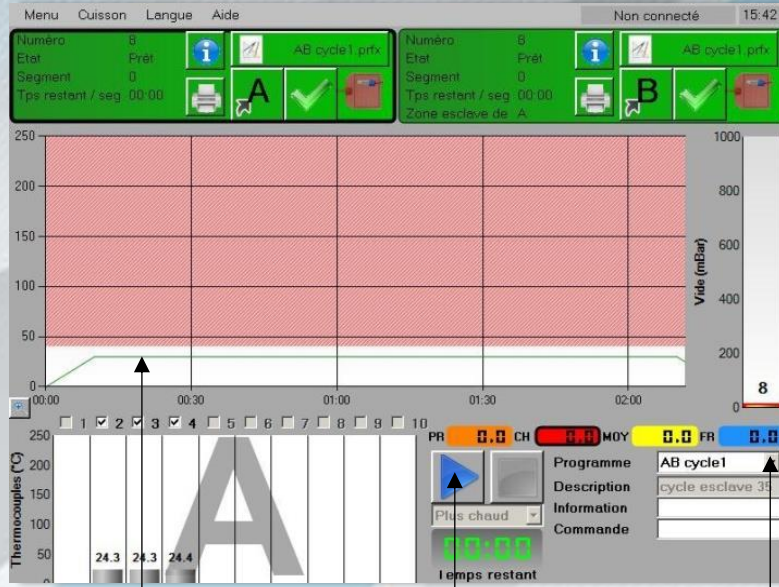
HOT BONDER

AHBEASY SV4

EASY MODE™:

A user without training can run a cure **in 2 clicks**.

You do not need to be logged in.



Program to be run

Click 2 : Press to run

Click 1 : Select the program among the list

SPECIFICATIONS & FEATURES :

PHYSICAL PROPERTIES	
Weight	6.5 Kg
Size	370 x 170 x 256 mm
Display Type	Full color, High brightness 10,1" TFT screen
Input power	100 to 240 VAC self sensing
Input amperage	16 Amp
Circuit Breaker	16 Amp
GFCI	30 mAmp
Vacuum	No
Vacuum measurement	Yes
Thermocouples type	J or K
Thermocouples per zone	6
Heating systems	Heater mat, IR Lamp, Hot gun
USB Port	1 ports (memory stick and external devices)
Printer	Matrix printer with paper 57mm width

HOT BONDER

AHBEASY SV4

SOFTWARE PROPERTIES

Multi languages	French/English/German/Japanese/ Chinese/Dutch/Russian/Turkish
Units of measure	F°/C° mbar/bar/mmHg/inHg/PSI
Password protection	3 levels
Number of ramp / dwell	8 / 7
Modify a program in process	Yes
Parameters recorded	Set point, All thermocouples temperature, vacuum, events and alarms
Frequency recording	Every 2 seconds
Deselection of thermocouples during the cure	Yes
Control mode	Hottest, Average, Coldest or TC 1 to 10
Power failure recovery	Yes with printed notification
Alarm	Color visual and audible designation of all alarm states
Programmable without a personal computer	Yes
Number of storable cure programs	Unlimited
Number of stored cured data	Unlimited
Tracking chart values	Yes, during and after the cure
Data Acquisition (DAQ)	Yes

REPORT

Print out	Yes
Print interval	1 to 10 000 seconds
Number of print out stored cure data	Unlimited
Report type	CSV, PDF and print out at once
Report content	Show all information about the cure for traceability, including alarms and events logs on PDF format.

ALARM

Thermocouples breaks	Yes
High and low deviation process	Yes
Over Temperature	Yes (possibility: TC10 as OT trip)
Low vacuum	Yes
Power failure	Yes

HOT BONDER

AHBEASY SV4

SMS ALARM

Choice of events :	
- Out of band	Yes
- Over temperature	Yes
- TC problem	Yes
- 100% heating	Yes
- Vacuum level	Yes
- Power failure	Yes
- End of cure	Yes
Phone number alerted	1 to 5
SMS Test	Yes
Check the data curing on process	Yes by sending SMS
Alert	SMS and audible alarm
Type of issue mentioned in the SMS	Yes



SMS Module

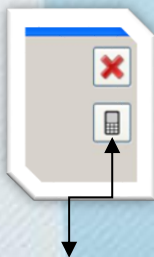
ACCESSORIES

SMS Box	1
Data Cable	1
Main Power Cable	1
SIM Card	Not included

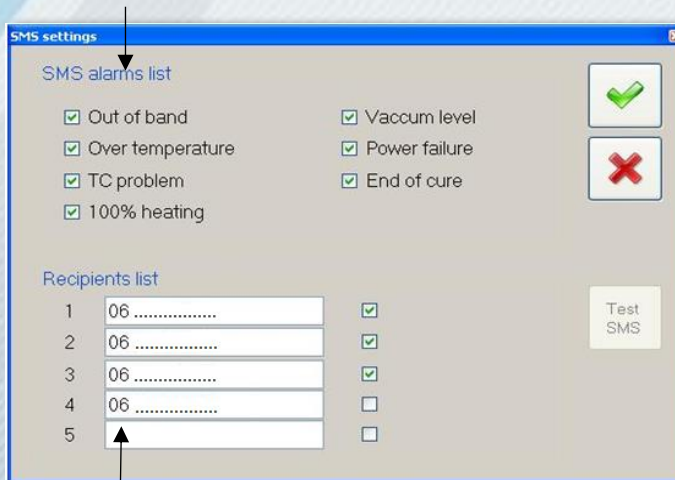
PHOTOS & PICTURES

OPTION SMS :

Click 2: Select the types of alarm



Click 1: Press the logo to select the SMS option, before starting the cure.

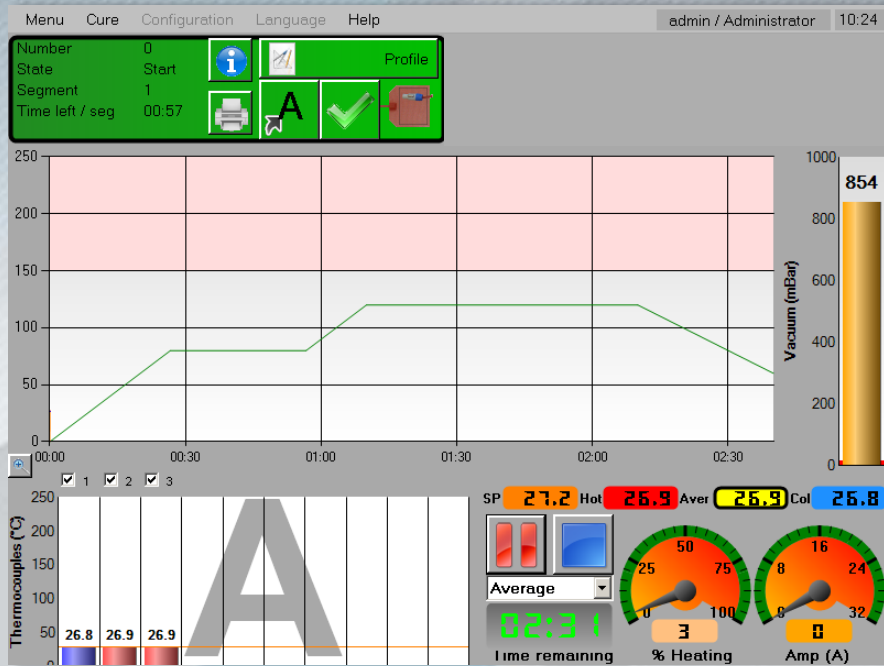


Click 3: Implement mobile numbers.

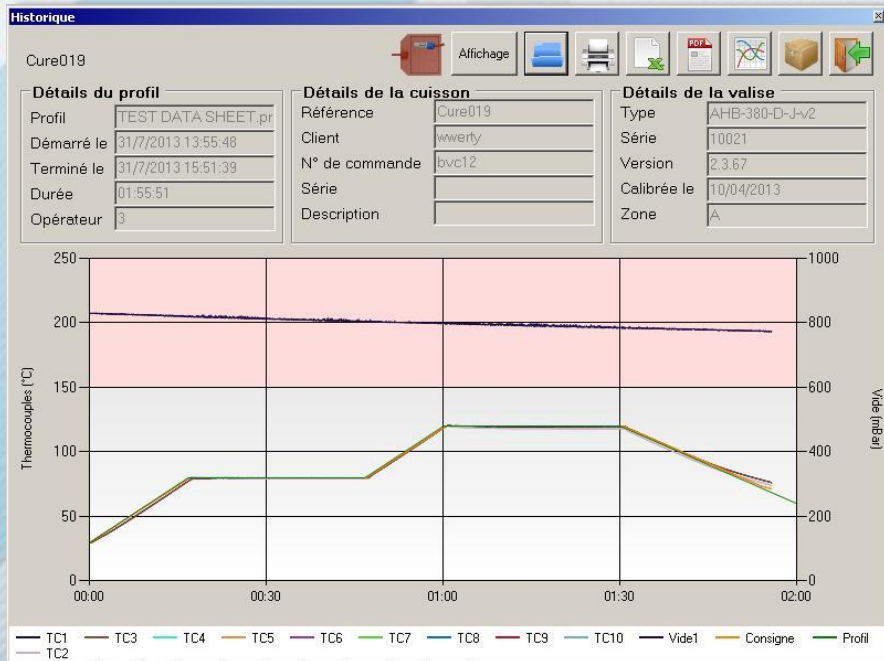
HOT BONDER

AHBEASY SV4

SCREENSHOTS:



Control your curing operation



Analyze in detail your cure

HOT BONDER

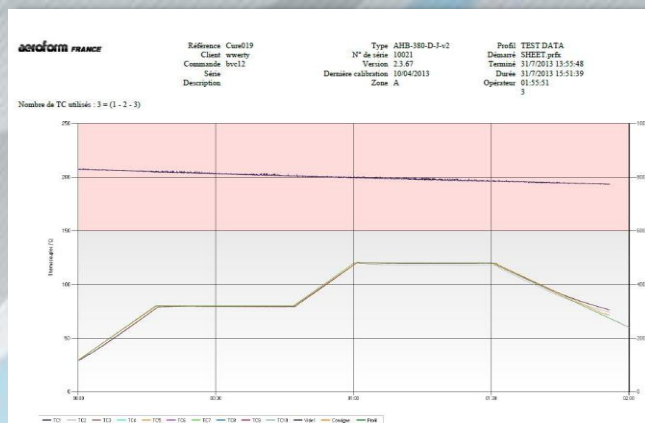
AHBEASY SV4

The three different print out of the cure results:

Options of reports



1. PDF Format



2. CSV Format

Time elapsed	Hottest	Average	Coldest	Set Point	Heat %	Amp	Vacuum (mBar)	TC1 (C)	TC2 (C)	TC3 (C)
0	29.6	29.6	29.6	29.7	0	0.1	830	29.6	29.6	29.6
2	29.7	29.7	29.7	29.9	1	0	830	29.7	29.7	29.7
5	29.7	29.67	29.6	30.0	3	0	829	29.6	29.7	29.7
7	29.8	29.73	29.7	30.1	3	0	830	29.7	29.8	29.7
9	29.8	29.67	29.6	30.2	4	0	830	29.6	29.8	29.6
12	29.9	29.7	29.6	30.3	5	0	828	29.6	29.9	29.6
14	30.1	29.9	29.8	30.5	4	0	829	29.8	30.1	29.8
16	30.1	29.87	29.7	30.6	4	0	829	29.7	30.1	29.8
19	30.2	29.97	29.8	30.7	5	0	830	29.8	30.2	29.9
21	30.3	30.03	29.9	30.8	5	0	829	29.9	30.3	29.9
23	30.4	30.13	30	30.9	6	0	829	30	30.4	30
26	30.5	30.27	30.1	31.0	5	0.1	829	30.2	30.5	30.1
28	30.6	30.27	30.1	31.2	6	0.1	830	30.1	30.6	30.1

3. Paper Ticket Format

