

## HOT BONDER

## AHB380S V3

### SINGLE ZONE

Our AHB380S is ideal for complex repairs involving different materials and work areas.

It can repair very large zones and can be used with up to 10 TCs.



#### IDEAL FOR

- ✓ Universal Repairs
- ✓ 10 TCs for 1 zone

#### ADVANTAGES

- ✓ Easy Mode
- ✓ Data acquisition
- ✓ Unlimited programs
- ✓ Quiet Venturi
- ✓ 3 types of report
- ✓ Double circuit breaker

#### MAIN FEATURES

- ✓ 8.4" TFT touch screen
- ✓ 10 thermocouples
- ✓ 2 USB ports
- ✓ Weight : 11 Kg

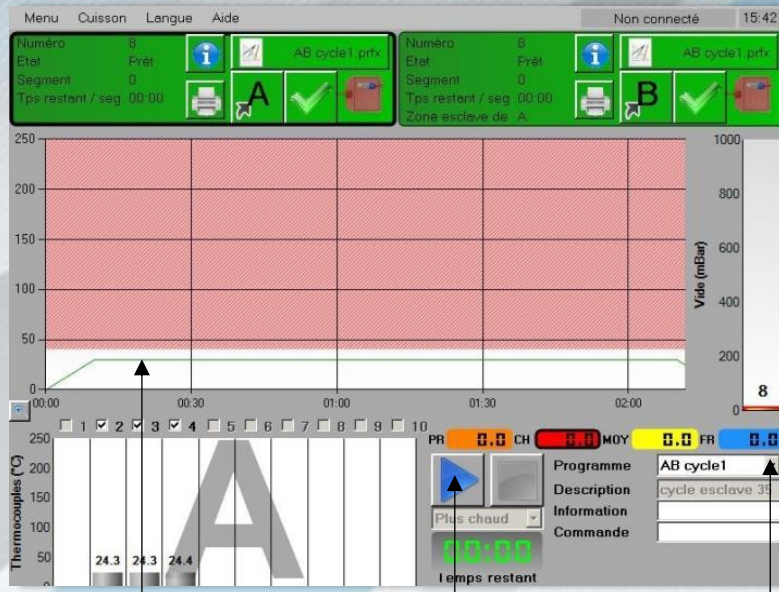
#### OPTIONS

- ✓ Accessory case
- ✓ SMS Alarm
- ✓ Remote screen on touch tablet smartphone & laptop
- ✓ Possibility in 32 Amp
- ✓ Calibration software
- ✓ Composite repair training

**EASY MODE™:**

A user without training can run a cure **in 2 clicks.**

You do not need to be logged in.



Program to be run

**Click 2 :** Press to run

**Click 1 :** Select the program among the list

**SPECIFICATIONS & FEATURES :**

PHYSICAL PROPERTIES	
Weight	11 Kg
Size	525 x 440 x 210 mm
Display Type	200mm Full color, High brightness 8,4" TFT screen
Input power	100 to 240 VAC self sensing
Input amperage	16 Amp
Circuit Breaker	16 Amp
GFCI	30 mAmp
Vacuum	Venturi
Vacuum level	900 mbar (26,5 in Hg)
Vacuum measurement	Yes
Thermocouples type	J or K
Thermocouples per zone	10
Heating systems	Heater mat, IR Lamp, Hot gun
USB Port	2 ports (memory stick and external devices)
Printer	Matrix printer with paper 57mm width



**HOT BONDER**
**AHB380S V3**
**SOFTWARE PROPERTIES**

<b>Multi languages</b>	Yes
<b>Units of measure</b>	F°/C° mbar/bar/mmHg/inHg/PSI
<b>Password protection</b>	3 levels
<b>Number of ramp / dwell</b>	8 / 7
<b>Modify a program in process</b>	Yes
<b>Parameters recorded</b>	Set point, All thermocouples temperature, vacuum, events and alarms
<b>Frequency recording</b>	Every 2 seconds
<b>Deselection of thermocouples during the cure</b>	Yes
<b>Control mode</b>	Hottest, Average, Coldest or TC 1 to 10
<b>Power failure recovery</b>	Yes with printed notification
<b>Alarm</b>	Color visual and audible designation of all alarm states
<b>Programmable without a personal computer</b>	Yes
<b>Number of storable cure programs</b>	Unlimited
<b>Number of stored cured data</b>	Unlimited
<b>Tracking chart values</b>	Yes, during and after the cure
<b>Data Acquisition (DAQ)</b>	Yes

**REPORT**

<b>Print out</b>	Yes
<b>Print interval</b>	1 to 10 000 seconds
<b>Number of print out stored cure data</b>	Unlimited
<b>Report type</b>	CSV, PDF and print out at once
<b>Report content</b>	Show all information about the cure for traceability, including alarms and events logs on PDF format.

**ALARM**

<b>Thermocouples breaks</b>	Yes
<b>High and low deviation process</b>	Yes
<b>Over Temperature</b>	Yes (possibility: TC10 as OT trip)
<b>Low vacuum</b>	Yes
<b>Power failure</b>	Yes

## HOT BONDER

## AHB380S V3

SMS ALARM	
<b>Choice of events :</b>	
- Out of band	Yes
- Over temperature	Yes
- TC problem	Yes
- 100% heating	Yes
- Vacuum level	Yes
- Power failure	Yes
- End of cure	Yes
<b>Phone number alerted</b>	1 to 5
<b>SMS Test</b>	Yes
<b>Check the data curing on process</b>	Yes by sending SMS
<b>Alert</b>	SMS and audible alarm
<b>Type of issue mentioned in the SMS</b>	Yes



SMS Module

ACCESSORIES	
<b>SMS Box</b>	1
<b>Data Cable</b>	1
<b>Main Power Cable</b>	1
<b>SIM Card</b>	Not included

### PHOTOS & PICTURES OPTION SMS :

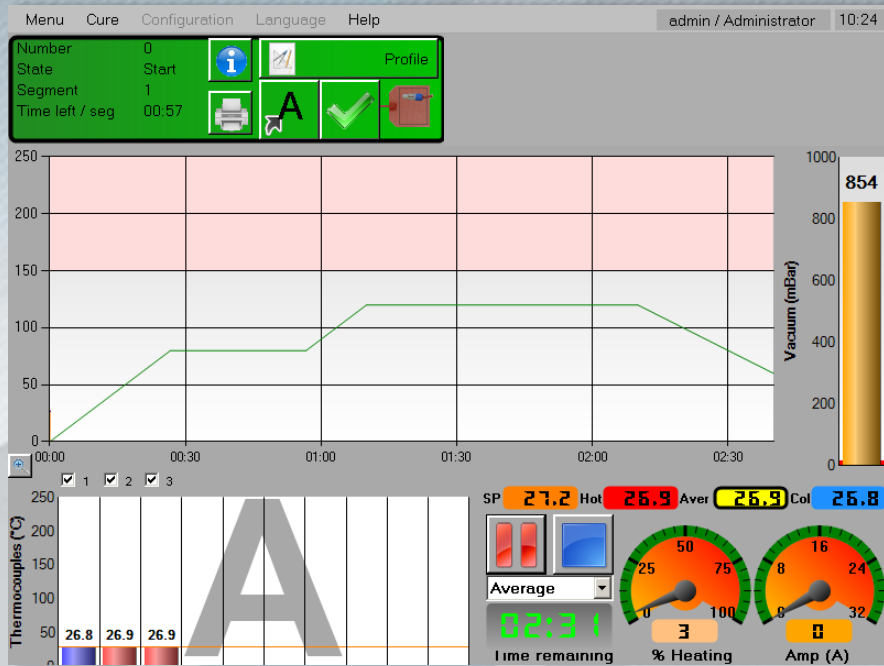


**Click 1:** Press the logo to select the SMS option, before starting the cure.

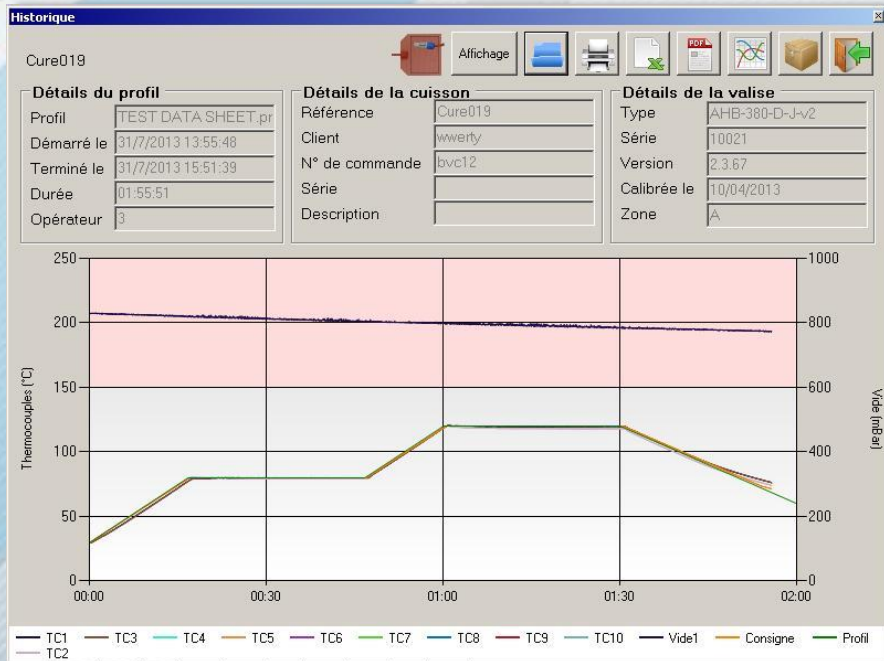
**Click 2:** Select the types of alarm

**Click 3:** Implement mobile numbers.

**SCREENSHOTS:**



**Control your curing operation**



**Analyze in detail your cure**

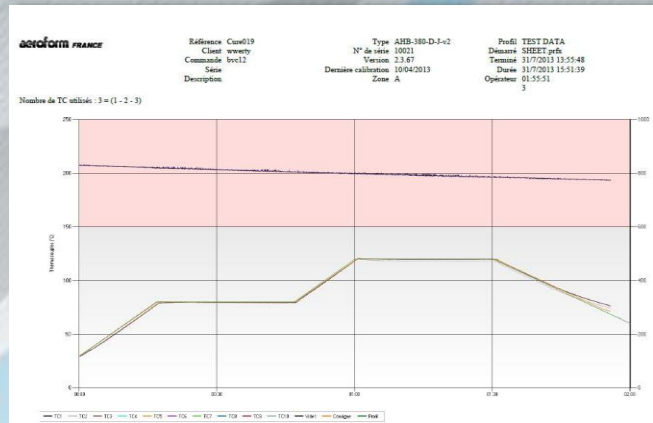


**The three different print out of the cure results:**

**Options of reports**



**1. PDF Format**



**2. CSV Format**

Time elapsed	Hottest	Average	Coldest	Set Point	Heat %	Amp	Vacuum (mBar)	TC1 (C)	TC2 (C)	TC3 (C)
0	29.6	29.6	29.6	29.7	0	0.1	830	29.6	29.6	29.6
2	29.7	29.7	29.7	29.9	1	0	830	29.7	29.7	29.7
5	29.7	29.67	29.6	30.0	3	0	829	29.6	29.7	29.7
7	29.8	29.73	29.7	30.1	3	0	830	29.7	29.8	29.7
9	29.8	29.67	29.6	30.2	4	0	830	29.6	29.8	29.6
12	29.9	29.7	29.6	30.3	5	0	828	29.6	29.9	29.6
14	30.1	29.9	29.8	30.5	4	0	829	29.8	30.1	29.8
16	30.1	29.87	29.7	30.6	4	0	829	29.7	30.1	29.8
19	30.2	29.97	29.8	30.7	5	0	830	29.8	30.2	29.9
21	30.3	30.03	29.9	30.8	5	0	829	29.9	30.3	29.9
23	30.4	30.13	30	30.9	6	0	829	30	30.4	30
26	30.5	30.27	30.1	31.0	5	0.1	829	30.2	30.5	30.1
28	30.6	30.27	30.1	31.2	6	0.1	830	30.1	30.6	30.1

**3. Paper Ticket Format**

